

**BELFAST CITY CENTRE – TASK AND FINISH GROUP**

*Suggestions for Linen Quarter road infrastructure improvements*

## Scope of report

This report has been compiled at the request of the Department for Infrastructure to inform the newly formed City Centre Task & Finish group about outstanding road infrastructure issues within the geographical footprint of the Linen Quarter Business Improvement District. See below for all identified issues. While existing reporting mechanisms are in place to report some of the issues identified (NI Direct online portal), other issues such as obsolete street furniture and weed growth cannot be reported online.

---

## Road condition

*(reported via online NI Direct portal)*



13-17 Amelia St  
*Faded road markings*



19-21 Bedford St  
*Faded road markings*



28 - 40 Linenhall St  
*Faded road surface*



35-43 Bedford St  
*Faded Road markings*



42 Dublin Rd  
*Faded road markings*



Adelaide St Franklin St  
junction  
*Faded road markings*





Adelaide St Ormeau Ave  
junction  
*Faded road markings*



Alfred St Russell St junction  
*Faded road markings*



Maryville St Bankmore St  
junction  
*Faded road markings*



Clarence St Adelaide St  
junction  
*Faded road markings*



James Street South (Bedford  
House)  
*Faded road markings*



Brunswick St Howard St  
junction  
*Faded road markings*



Bankmore St / Ormeau Ave  
junction (entrance to  
Charlotte St car park) *flooded  
road surface (due to blocked  
drain?)*

### **Drainage issues**

*(reported via online NI Direct portal)*

1. The drain outside Boojum, Great Victoria Street causes problems for pedestrians because of the amount of water (and depth) that accumulates across the pavement;
  2. There are several blocked drains at either side of Grand Central Hotel. Water gathers where the curbs drop which makes it particularly difficult for people using wheelchairs and walking aids as they have no choice but to walk through the puddles instead of around;
  3. Ongoing issue with the drain on Franklin Street/Linenhall Street, resulting in large pools forming in front and to the side of Snax in the City;
  4. Ongoing issues on Ventry Lane: Whilst the main issues on Ventry Lane continue to be poor bin management, pests and ASB/drug use, the drains are in a poor condition and results in flooding particularly in the winter months;
  5. The on-street parking bays on the Western side of Brunswick Street (in front of Amelia Hall) frequently flood, particularly after rainy days.
- 

### **condition of footways**

*(reported via online NI Direct portal)*



39 43 Bedford St  
*uprooted pavement*



83 Dublin Rd  
*uprooted pavement*



**weed growth / poor planting**



2 Franklin St  
*weeds growing*



8-10 Clarence St  
*weeds growing*



13-17 Linenhall St  
*weeds growing*



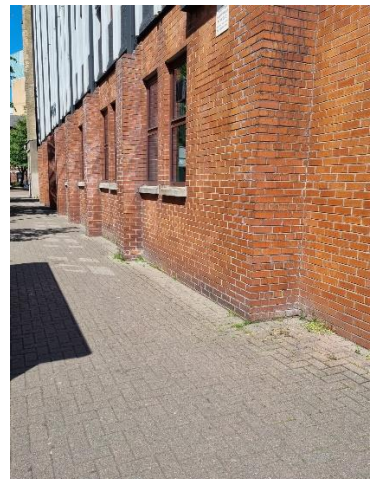
27 Bruce St  
*poorly maintained planting*



27-37 Linenhall St car park  
*weeds growing*



45 Great Victoria St Hope St  
*poorly maintained planting*





127 Great Victoria St and  
Stroud St  
*Weeds growing*



Bankmore St car parks  
*weeds growing*



BBC Broadcasting House  
Ormeau Ave  
*weeds growing*



Fermanagh House Maryville  
St  
*weeds growing*

Tyrone House Ormeau Ave  
*weeds growing*

Clarence Court Alfred St  
*weeds growing*

## redundant street furniture

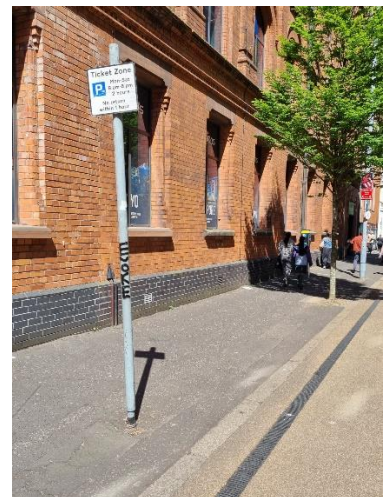
### *redundant on-street parking notices*



12 Brunswick St  
*2x on-street parking notices  
redundant due to removal of  
on-street parking spaces*



15 & 17 Brunswick St  
*2x on-street parking notices  
redundant due to removal of  
on-street parking spaces*



1 to 91 Adelaide St  
*10x on-street parking notices  
redundant due to removal of  
on-street parking spaces  
following installation of the*

*following installation of the  
FLAXX Social Space*



*11 Linenhall St  
on-street parking notice  
redundant due to removal of  
on-street parking spaces  
following installation of a  
Parklet*

*following installation of the  
FLAXX Social Space*



*17 Bedford St  
on-street parking notice  
redundant due to removal of  
on-street parking spaces  
following installation of a bus  
stop*

*Adelaide St footway  
extension*

*unused street posts*



*69 Great Victoria St  
2x unused street posts*



*100 Great Victoria St  
2x unused street posts*



*69 Great Victoria St  
unused lamp post*





25 Ormeau Ave  
*unused street post*



34 Bedford St  
*unused street post*



50 Dublin Rd  
*unused street post*



79 Great Victoria St  
*unused street post*



Bankmore St 1  
*unused street post*



Bankmore St 2  
*unused street post*



Bankmore St 3  
*unused street post*



Bruce St  
*unused street post*



Ventry St 1  
*unused street post*





Ventry St 2  
*unused street post*

---

*redundant new road layout signage*



3x new road layout signage across 3 different sites:

- Franklin Street EB near corner with Adelaide Street  
*(redundant as the new road layout installed as part of Adelaide St footway extension is now in place for 3 years)*
  - Clarence Street EB near corner with Adelaide Street  
*(redundant as the new road layout installed as part of Adelaide St footway extension is now in place for 3 years)*
  - Clarence Street WB near corner with Adelaide Street  
*(redundant as the new road layout installed as part of Adelaide St footway extension is now in place for 3 years)*
-

### *Redundant covid signage*



16x Covid signage across 15 different sites:

- 14-16 Great Victoria Street
  - 21 Bedford street (x2)
  - 38 Dublin Road
  - 52-54 Dublin Road
  - 60-66 Dublin Road
  - 74-76 Dublin Road
  - 1-5 Linenhall Street
  - 21 Linenhall Street
  - 29 Linenhall street
  - 32-38 Linenhall Street
  - 2 Adelaide Street
  - 9 Adelaide Street
  - 25 Adelaide Street
  - 39-49 Adelaide street
  - 81 Adelaide Street
- 

### *Other redundant street furniture*



Dublin Rd frontage of  
Bankmore Sq  
*defunct street light*



14 Dublin Rd  
*redundant bus shelter*

---



### **street signs**

*(reported via online NI Direct portal)*



42 Dublin Rd  
*broken / dirty street sign*

---

### **Street lighting**

*(to be reported via online NI Direct portal)*

Street lights will be surveyed as part of annual lighting survey in October.

---

## Miscellaneous



97 Dublin Road  
*damaged traffic lights casings*



20 Brunswick St  
*damaged utility box*



21 Alfred St  
*missing bicycle barrier posts*



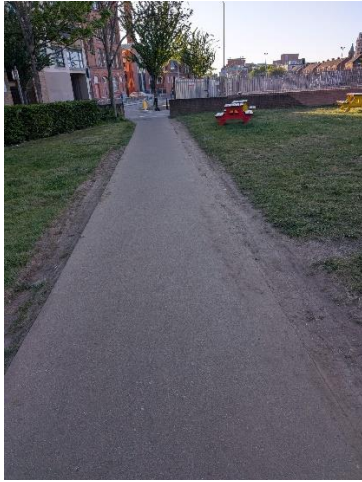
27 37 Adelaide St  
*missing bicycle stands*



81 Adelaide St  
*missing planters*



## Bankmore Square



Hardcastle St / Bankmore St  
entrance  
*damaged grass lawn due to  
vehicle movements*



Central circular feature  
*Cars parking on public land +  
damaged grass lawn due to  
vehicle movements*



Bedford st / Bankmore St  
entrance

---

Although LQ BID's lease ended in March, Bankmore Square continues to be cleaned by our dedicated team each morning, Mon-Sat. The team will remove needles and document how many are found on each shift:

- 21/05/25: 6 needles found and removed
- 08/05/25: 7 needles found and removed
- 05/05/25: Rough sleepers outside Marcus Ward
- 29/04/25: Rough sleeper outside Marcus Ward
- 11/04/25: 2 rough sleepers outside Marcus Ward
- 10/04/25: Rough sleeper on Bankmore Square
- 05/04/25: 2 needles found and removed

Vans from businesses and contractors are parked on the main square each day, providing some shelter.

---