

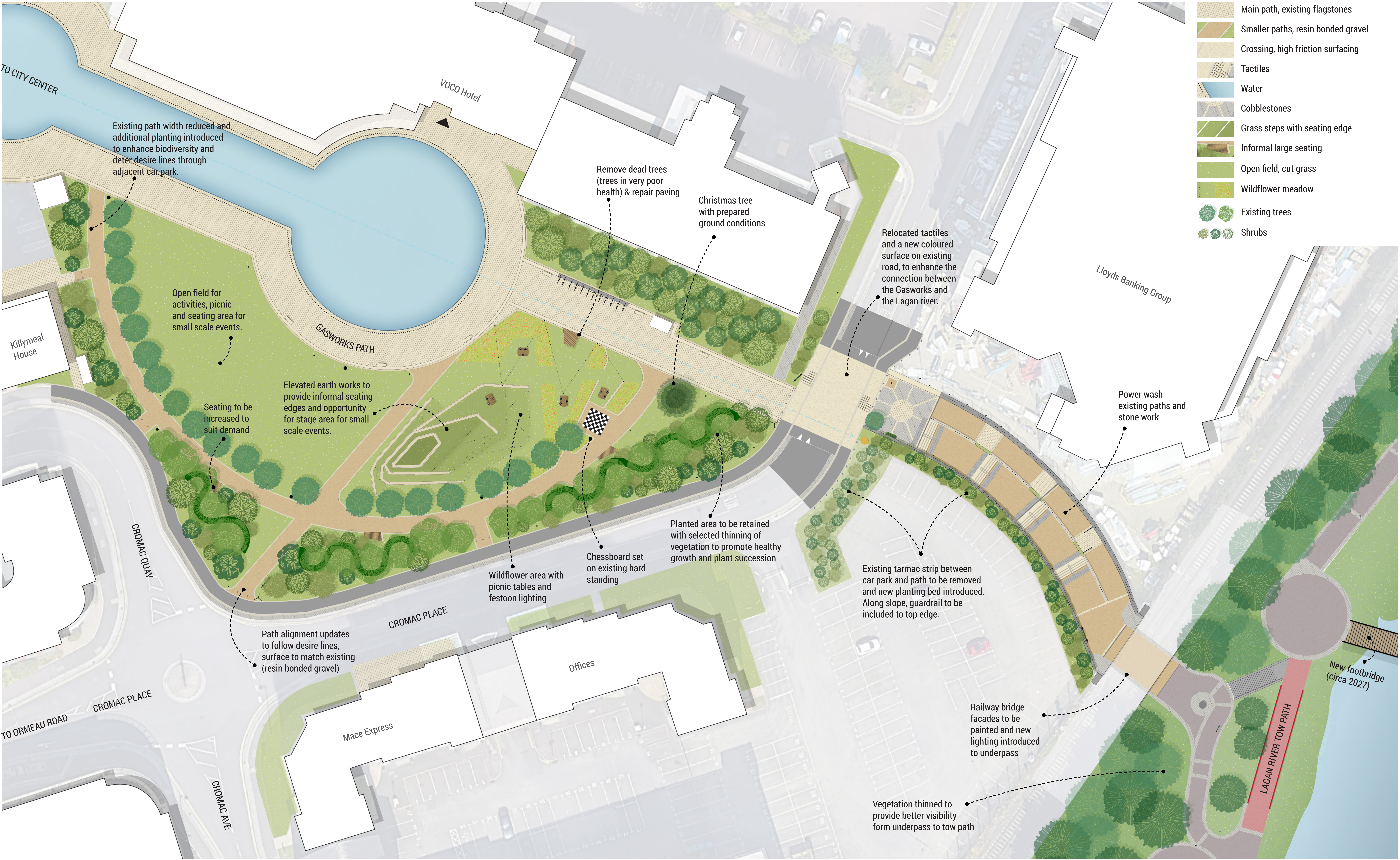
Gasworks Social Space

Belfast, Northern Ireland
Landscape Layout
November 2024

design proposal phase 1
Paper: A0
Scale 1:200



thepaulhogarthcompany



Gasworks Social Space – Landscape Proposals

November 2024

The Paul Hogarth Company, through consultation with key stakeholders, has developed proposals for the development of the Gasworks green space to promote social opportunity for both employees who work in the business park but also for visitors to the area. This is particularly important when considering the c.2027 introduction of the new pedestrian and cycle bridge across the Lagan which will inevitably increase footfall through this space.

Below is a summary of the proposals, broken down into the key themes, this should be viewed alongside the accompanying plan which geolocates the number references below.

A. Planting/Biodiversity Improvements

The brief for this project asks for enhancements to the biodiversity, it is intended that this will be achieved through the following deliverables:

1. **Killymeal House Boundary Treatment:** It is proposed, the path width will be reduced, cobble stones carefully lifted for reuse, bollards removed and a larger area of planting introduced, this will include upgrading the existing planting beds currently within the ownership boundary of Killymeal House.
2. **Planted area in front of The Lighthouse Building:** This bed is to be retained, with selected thinning of over mature/unhealthy plants and the introduction of additional planting with colour. Lower plants to be incorporated along the path edge, rising to higher shrubs along the façade edge, making sure not to obscure the views out from the building
3. **Existing Semi-circle boundary planting (trees and shrubs):** Over mature plants to be removed, selected thinning to be undertaken to promote healthy growth and plant succession. Winding beech hedge to be cut to a height of 1m and tree canopies to receive a crown lift to improve sight lines and visibility. Removal of one Lime tree to allow for new path alignment.
4. **Grass Lawns:** Existing grass area to west will remain as an open lawn with slight adjustments to the path alignment the area will increase slightly. To the east some earthworks will be introduced to create social space along with the introduction of a meadow area – introducing wildflower seeds and alternative management regimes to improve biodiversity.
5. **Internal semi-circle of trees (Prunus var.):** Tree condition is good, trees to be retained, selective removal of 1 tree because of bark damage and 2 no trees to allow for new path alignment.
6. **Christmas Tree:** A permanent Pine/Spruce will be planted alongside a recessed power supply to allow for festive decoration. Soil sampling due to take place to establish potential of ground

contamination. If contamination is found design measures will be introduced to protect the tree from damage as a result of this.

7. **Cromac Place Car Park Boundary:** Part of tarmac and parking places to be removed and replaced by a biodiverse planting bed.
8. **Pedestrian Route to Towpath:** Existing tarmac strip to be replaced with biodiverse planting bed.
9. **Planting area between the railway and towpath:** Vegetation to be thinned and reduced to provide better visibility from underpass to tow path, Consideration to be given to additional planting to improve biodiversity.

B. Paths and Circulation

How people move through a space is an important part of its success. Consideration has been given to this through the proposals seeking to improve desire lines and introduce small improvements and larger scale interventions to enhance the space for all users.

10. **Cleansing:** A full cleansing of parts of the existing materials is proposed, especially the resin bonded gravel paths.
11. **Primary Route:** To the eastern part of this route between the water feature and the road there are five tree pits situated within the paved area, three include trees, and all three trees are significantly struggling in very poor condition. These trees are not in good enough condition to be retained, it is proposed they are removed. The tree pits will be paved in line with the existing pavement with the rationalisation of the edge. Circular edge kerbs to tree pits to be retained for potential future use.
12. **Axial paths:** The resin bonded gravel paths will be rationalised to create better desire lines, reusing kerbing material where feasible. The two radial paths intersecting the grass meadows will be removed and replaced with one new one following a more apparent desire line from the water feature to the junction of Cromac Place and Cromac Quay. The inner semi-circle path, while maintained, is realigned slightly to the eastern end to better suit desire lines.
13. **Feature Terrace Lawns:** Within the eastern section of the grass area a series of terraced steps are proposed, providing informal seating and opportunity for users to engage differently with the space.
14. **Cromac Place Pedestrian Crossing:** The scheme proposed the relocation of the existing tactiles, reapplying the shark's teeth markings, and the addition of high friction surface on the tarmac to enhance safety and the connection between the main path and pedestrian route to the towpath.

C. Street Furniture, Features and Lighting

15. **The Railway Underpass:** Additional lighting is proposed and artwork will be introduced to either side of the bridge and underpass ceiling.
16. **Ramped section of Pedestrian Route to Towpath:** Recommendation from IMTAC include the rationalisation of the existing chicanes introduced to slow users. For safety it is proposed one chicane is retained to the bottom of the ramp. An in-fill material is to be considered to the links between the stepped and ramped routes where the chicanes are removed.
17. **Pedestrian Route to Towpath Safety Improvement:** Proposed introduction of a guardrail to the upper edge of the southern wall.
18. **Additional Seating Opportunity:** To provide more flexible seating and to bring a playfulness the design includes a series of 'pebble/deck seats' and 'smart seats'.
19. **Picnic Tables and Feature Lighting:** To provide accent lighting it is proposed that robust festoon lighting or tree lighting is included strategically within the space, focused on the area where a series of picnic benches are proposed to be included. The picnic tables will include an anchoring point to prevent risk of theft.
20. **Play opportunity:** There is a small section of hardstanding associated with the culverted river, that cannot be treated with planting, consideration has been given to utilising this space as a chessboard/or other similar board game. This would need to be developed in close consideration with the Hotel, as potential holders of the loose play pieces for hire.
21. **Lighting columns:** A review of the existing lanterns will be undertaken to establish if energy efficiency can be delivered through this project with the introduction of LED lighting.
22. **Painting of railings, posts and bollards:** Some of the existing Gasworks metal elements need a fresh layer of paint.

Gasworks Social Space

Belfast, Northern Ireland
Landscape Layout
November 2024

design proposal phase 1 - numbered
Paper: A0
Scale 1:200



thepaulhogarthcompany



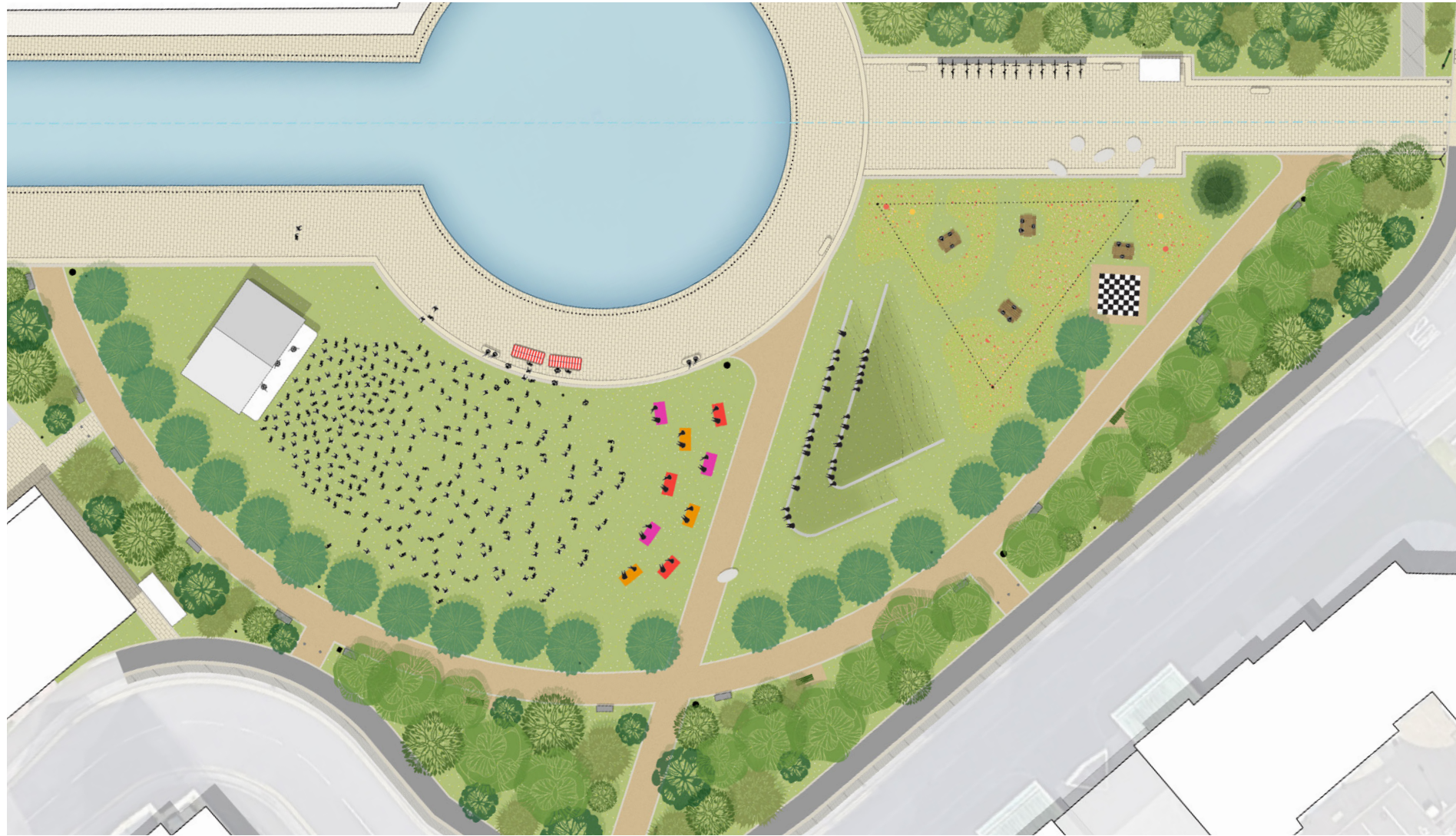
Gasworks Social Space

Belfast, Northern Ireland
Landscape Layout
November 2024

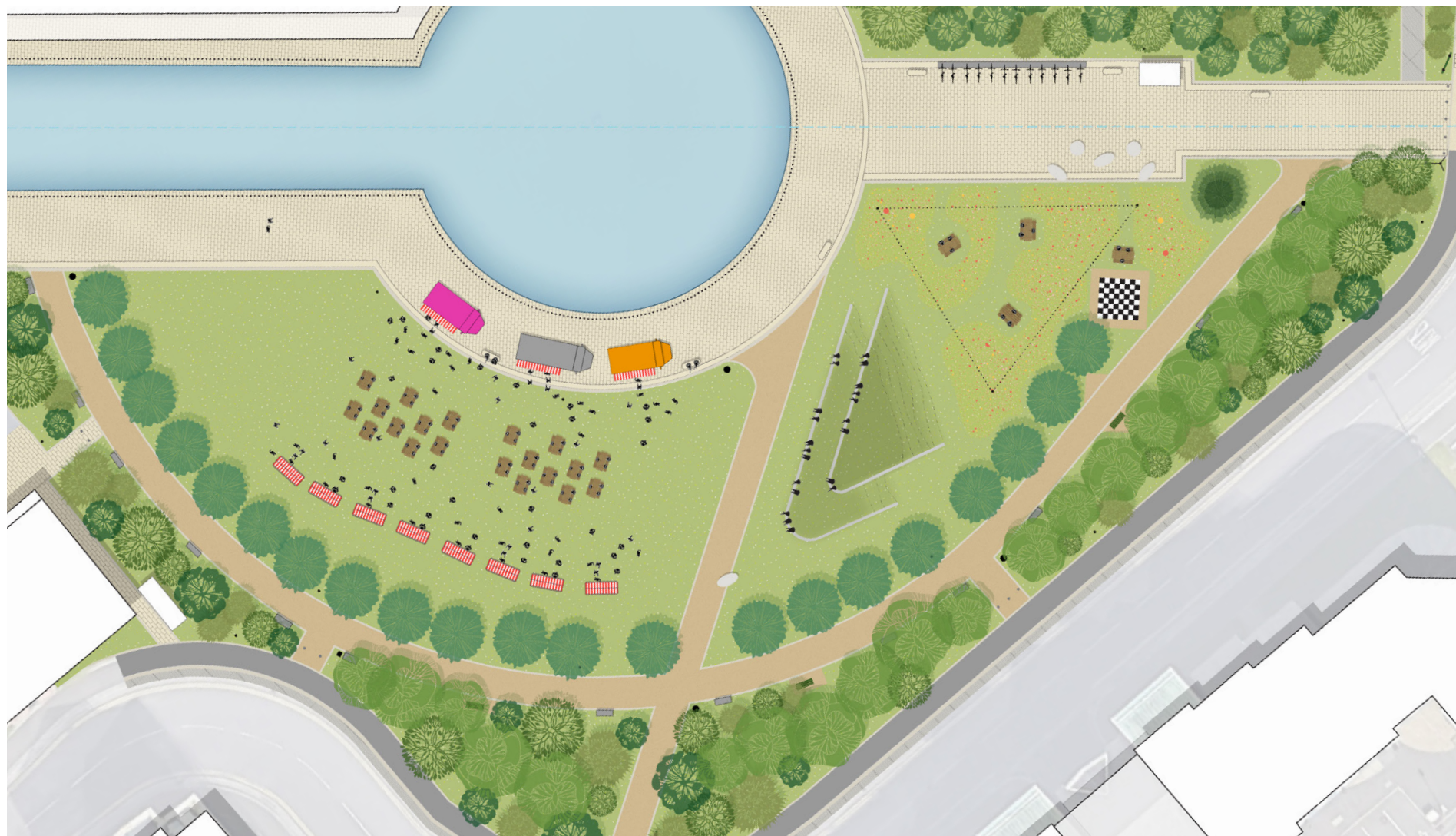
design proposal phase 1
Paper: A0
Scale 1:300



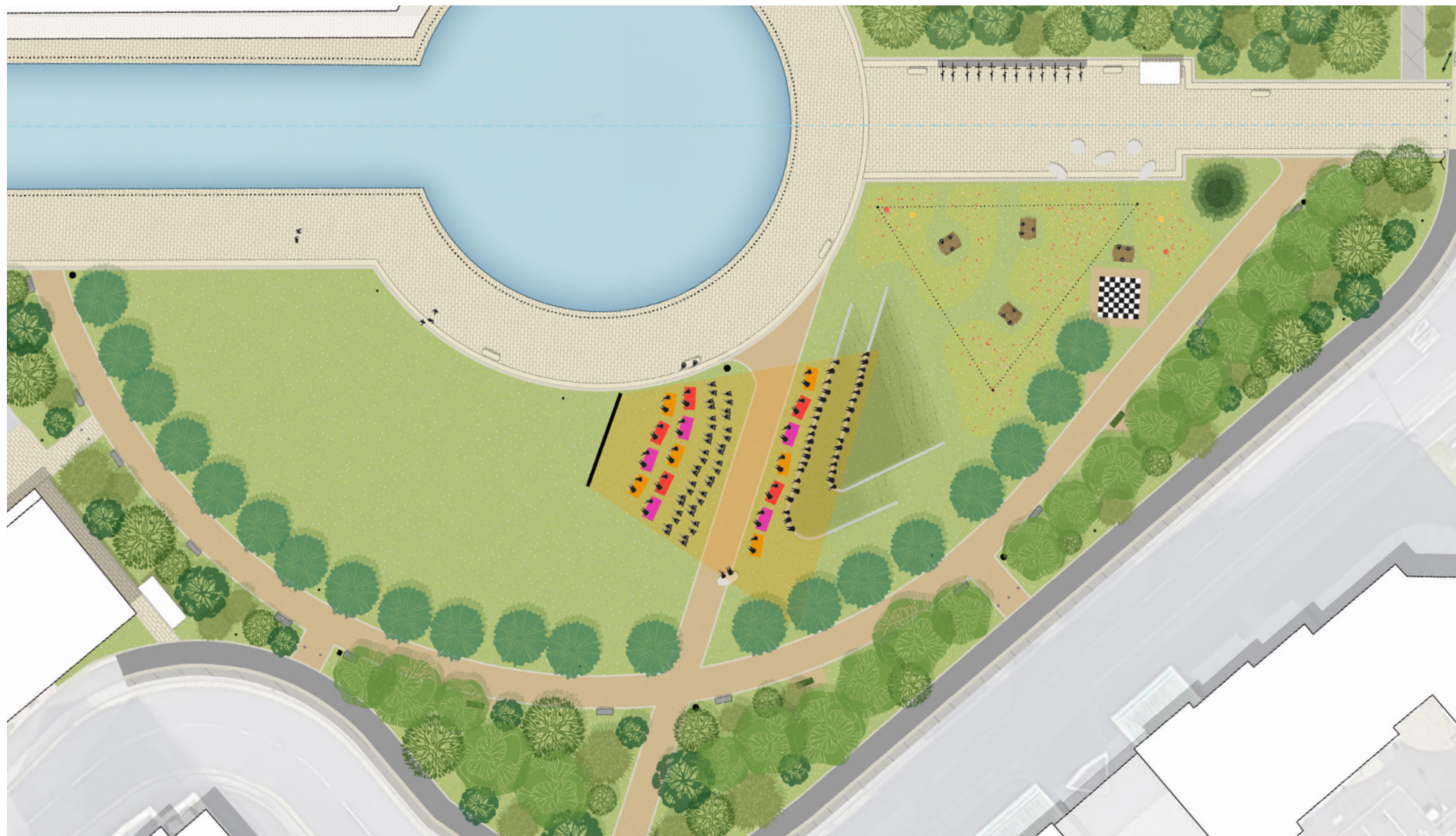
thepaulhogarthcompany



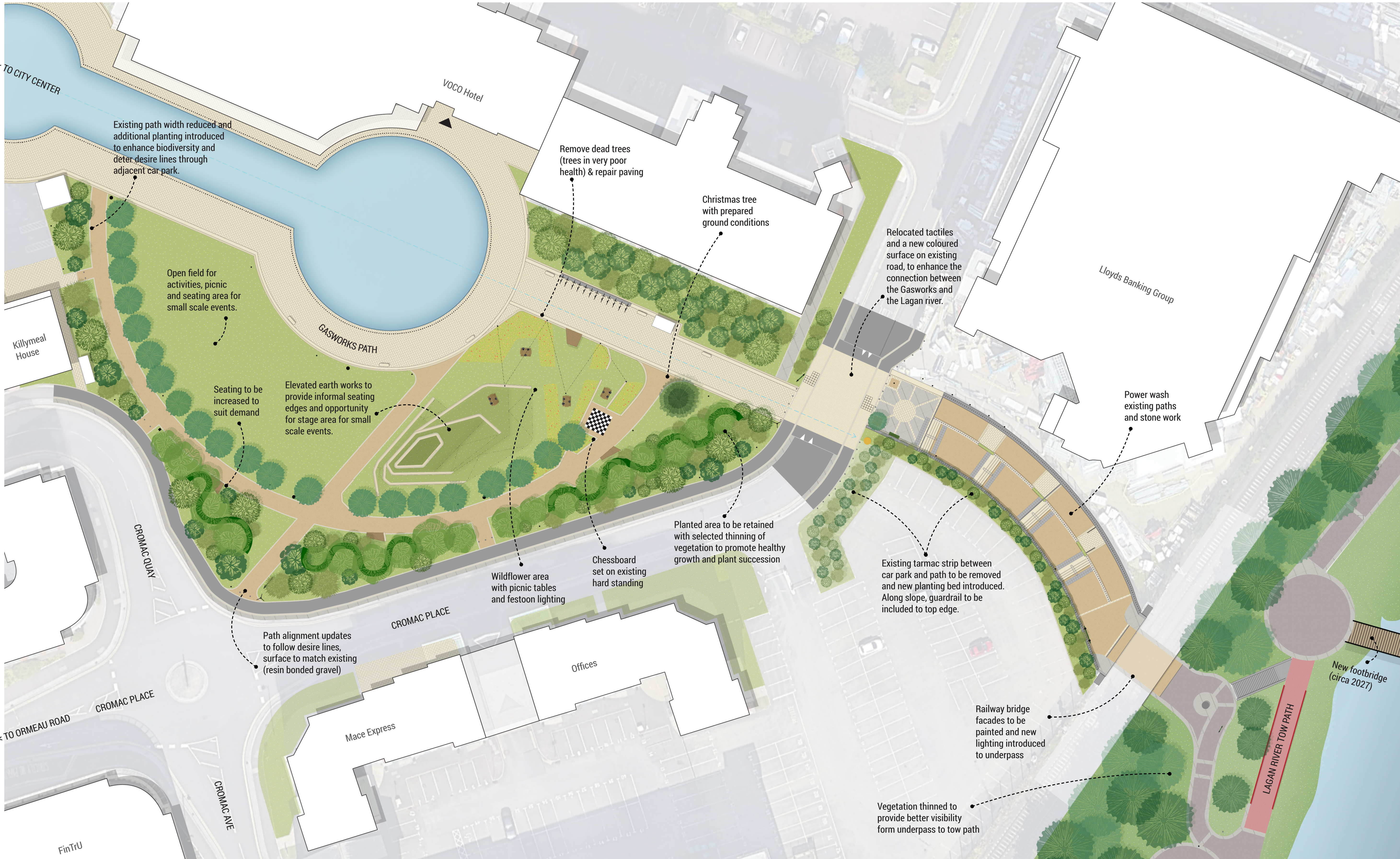
Example use of event space: festival



Example use of event space: market stalls



Example use of event space: outdoor cinema



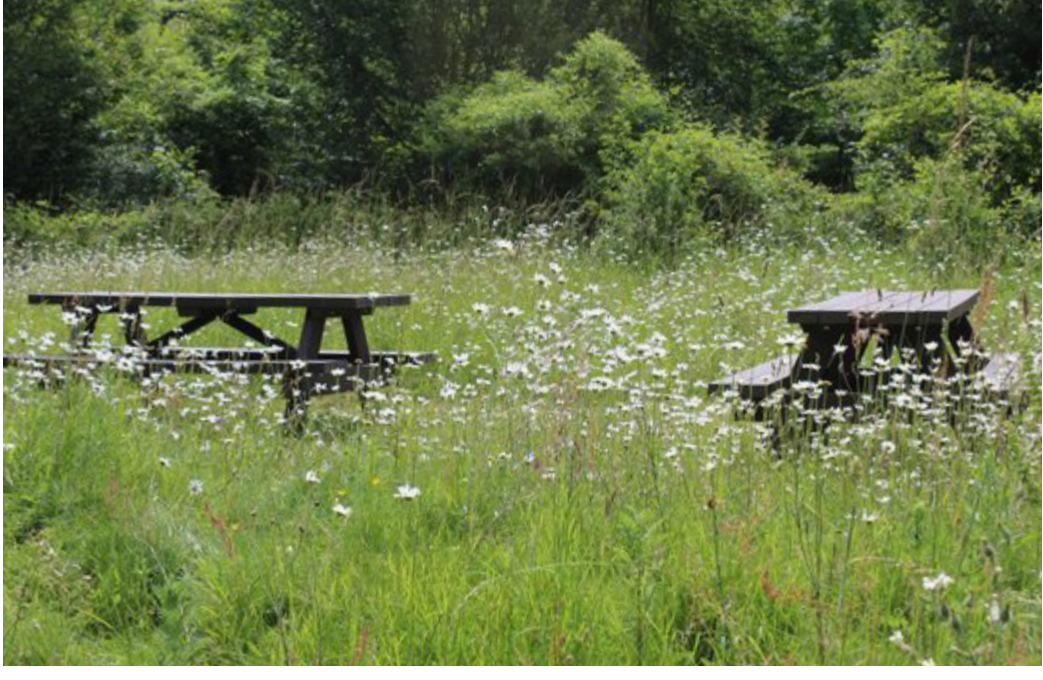
Flower meadow



Festoon lighting



Games Area



Outdoor Seating - picnic tables



Main path:
Flagstones, reuse existing



Cobblestones, reuse existing



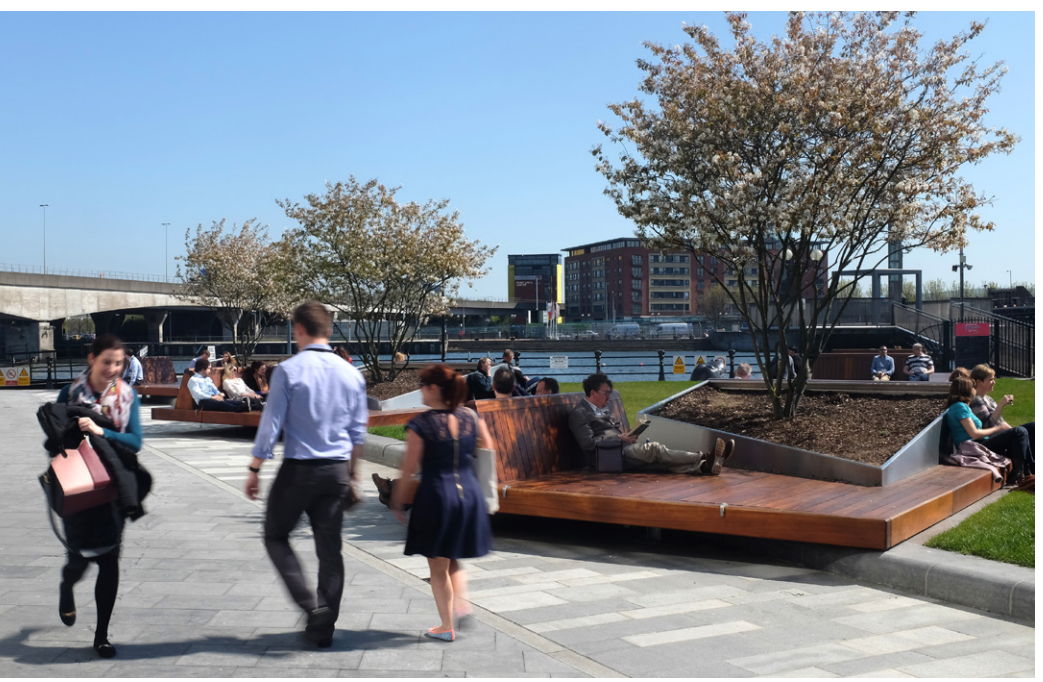
Biodiverse and open planting



Lighting trees



Lawn Space



Seating



Smaller paths:
Resin bound Gravel, light grey yellow



Road crossing:
High Friction Surface, on existing tarmac

- Main path, existing flagstones
- Smaller paths, resin bonded gravel
- Crossing, high friction surfacing
- Tactiles
- Water
- Cobblestones
- Grass steps with seating edge
- Informal large seating
- Open field, cut grass
- Wildflower meadow
- Existing trees
- Shrubs